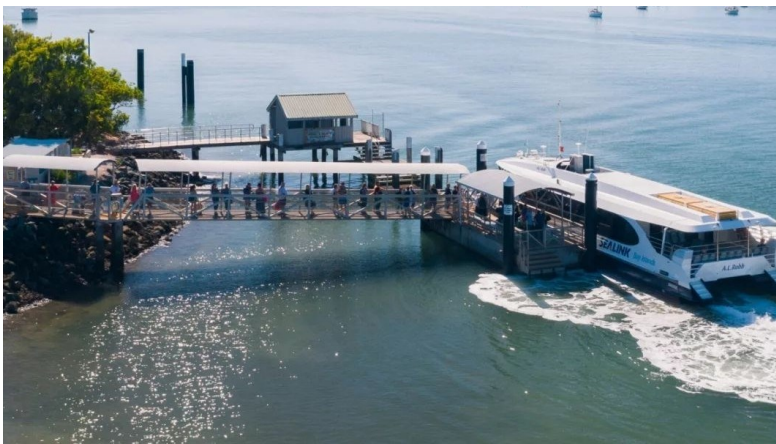
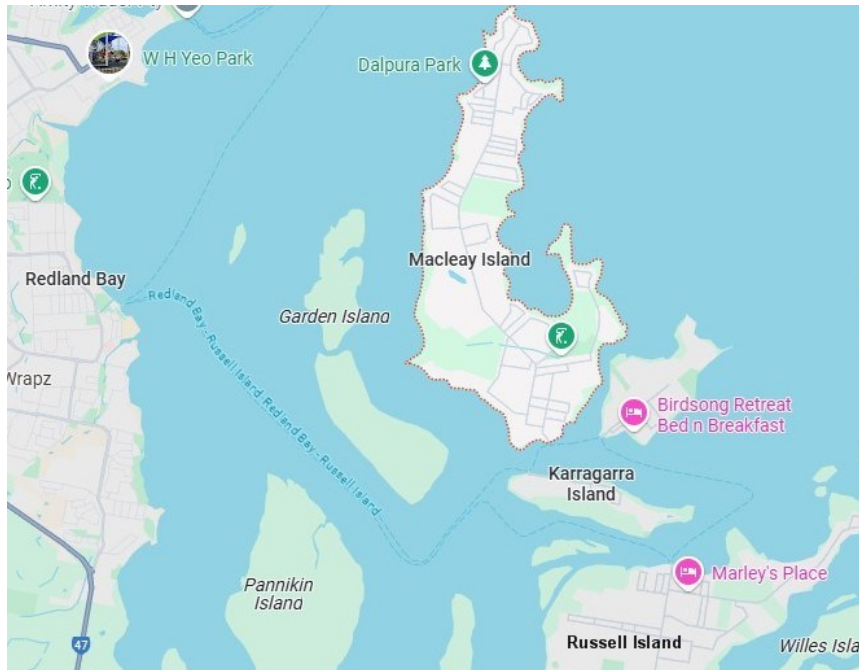


Carindale National Seniors Bus Trip

Wednesday 14th May 2025

“Macleay on the Bay”



Macleay Island is the fourth largest island in Moreton Bay. It is 6.5km long and 4km wide at its widest point. In the 2021 Census Macleay Island had a population of 3,193 people however this number varies with an influx of holiday makers and weekend tourists.

DEPART: Belmont Services Bowls Club 8.30am

RETURN: Approximately 3.30pm

COST: \$40pp (NSA Members), \$50 (non-NSA Members)

BOOK: Today or next meeting 1st May

PAY: Next meeting 1st May

CONTACT: Noel West 0419026362

The island's natural environment includes littoral rainforest, rocky shores, sandy beaches and mangrove areas. There is a large variety of birds inhabiting the island.

Macleay Island has a number of heritage listed sites including:

1. Tim Shea's wetland and waterhole
2. Industrial ruins of Campbell's Saltworks
3. Corroboree Point (Lion's Park)
4. Thompson's Point (Campbell's wharf)

