

Yarra Ranges Grapevine

The Journal of the National Seniors Australia Yarra Ranges Branch Inc
Incorporation No. A0048800C Branch No 100132

MARCH & APRIL 2021

PLEASE NOTE: Membership Renewals & Joining Members

Please ensure you use the 'Yarra Ranges NSA Application Forms' at the end of this 'Grapevine' & pay through the Branch. This informs NSA that you are a member of this Branch. The Branch receives an annual payment for your Membership.

[Click here for Membership Form](#)

Trip Note: - need to Book with Chris ASAP
'NORTH EAST VICTORIA SILO ART TRAIL' - May 2021

President's Report

Hi Members,

The Picnic Branch Meeting in February at the end of Chapel Street Lilydale was a great success, especially during these strange times of Covid.

The two 'Dining Outs' we had during February were very well attended by approximately 34 members - with good company and food.

The Mystery Trip, although not a great day, was fun. We didn't know where we were going, but we got there. Read John W's account in this 'Grapevine'.

St Andrews Beach Brewery, which was originally Lee Freeman's stables, was a great venue. The stables were converted into eateries in single or double stables. Read all about it in this 'Grapevine'.

Thank you to Pamela for chairing the Picnic Branch and Committee Meetings in February, during my absence.

Look forward to catching up with everyone at the next Meeting. Happy Reading Trevor

Branch Meetings

Monday
8 March @ 6.00pm
Picnic Meeting
Railway end of
Chapel Street
Lilydale

Monday
12 April @ 6.30pm
The Crown
(Back Room)
Main Street
Lilydale

If you have a suggestion for a Guest Speaker please let Denise or Committee Member know

Yarra Ranges NSA Branch Committee

President

Trevor - ☎ 9735 1104

Vice President & Welfare Officer

Pamela - ☎ 9735 5449

Secretary

Newsletter Editor

Lyn - ☎ 0459 155 527

Email: yarrarangesnsa@gmail.com

Treasurer

Anne - ☎ 97265135

Activities Coordinator

Chris - ☎ 9735 1249 / 0419 528 446

Email: chrishill3@bigpond.com.au

Guest Speaker Coordinator

Denise

☎ 9723 1403 / 0400 179 086

Newsletter Editor

Lyn ☎ 0459 155 527

Email: yarrarangesnsa@gmail.com

Committee Members

John and Connie - ☎ 5964 4646

Elaine - ☎ 9739 4642

Welfare Officer Please contact our WO if you know of anyone who is unwell, having an operation, in need of help or has passed away within the family. Vice President & Welfare Officer Pamela on ☎ 9735 5449



Congratulations to!

3 March Judy H

27 March Bill

20 April Huey

We would like to celebrate your day!

Don't forget to email / phone your birthday & month to Lyn

DIARY DATES

'WELCOME' to our BRANCH MEETING Dates - 2nd Monday of the Month

@ 'Lilydale Senior Citizens Centre Hall', 7 Hardy Street Lilydale @ 7:00pm for 7.30pm start

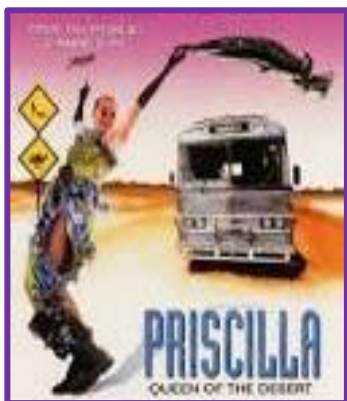
Monday 8 March 'Picnic' Meeting 6.00pm @

Railway end of Chapel Street Lilydale

Monday 12 April Meeting 6.30pm @ The Crown

Main Street Lilydale

Monday 10 May Speaker @ The Hall 7 Hardy St Lilydale



'Priscilla Queen of the Desert'

CLOC Musical

National Theatre

Corner Barlay & Carlisle Streets St Kilda

Sunday 2 May 2pm Matinee

\$52 Group Concession - Payment by March Meeting

Name and Musical Payment in an envelope to Lyn

(Note: No late orders can be accepted as it is a Group Booking)

COMMITTEE MEETINGS - 1ST Monday of Month

@ Chris' place Meet @ 7.30pm

Monday 1 March, Monday 5 April, Monday 3 May



'OUT & ABOUT' - Contact Chris 'Activities Coordinator' to Book

Please Note All payments in an envelope with name, amount of payment and Outing name. This will be a great help. Thank you, Chris

Wednesday 24 March 'Port Philip Ferry to Geelong' – Lilydale 7.30am train & 9.15am ferry - return, lunch at

'The Edge' Geelong Waterfront

Wednesday 31 March 'Yea Wetlands Tour' & 'Yea County Club

Lunch – Car Pool 9.30am L'dale

Wednesday 21 April

'Flinders Hotel' Lunch plus 'Point Leo Estate' Sculpur Park Merricks – Car Pool

Wednesday 5 May

'Moonlit Sanctuary' Pearcedale - Car Pool

Wednesday 12 May

'Cranbourne Botanical Gardens' - Car Pool
\$8 for 30 min tour in open air bus



'DINING OUT' - Contact Chris 'Activities Coordinator' to Book

Friday 5th March @ 6.00pm 'Fish n Chips' by the River @ Warrandyte

Sunday 14th March @ 12.00noon 'Chris' Café' - \$25 (includes \$5 fundraiser) includes:

Non-alcoholic punch, Spit roast meats, salads, sweets, chocolates, tea/coffee/iced coffee
@ 3 Mangans Rd Lilydale - (Chris H's house)

Saturday 29th May @ 6.00pm 'Enthaised' Dinner Casella Street Lilydale



'MORNING MELODIES' last Thursday of the Month – Contact Chris to Book

@ 'Olinda Creek Hotel' 161 Main Street Lilydale – Show 10:00am for 10:30am start

(Note: order & pay for lunch first) - Lunch – 11:30am (1 course \$14.00)

No information available

At the time of publishing

Cancelled



'TRIPS' - Contact Christ 'Activities Coordinator' for details

'NORTH EAST VICTORIA SILO ART TRAIL' - Monday 17th May to Friday 21st May –

\$1,499.00

'BUSHFIRE RECOVERY TOUR' - Monday 6th September to Saturday 11th September –

\$1,899.00

'KING ISLAND TOUR' - Monday 22nd November to Friday 26th November -

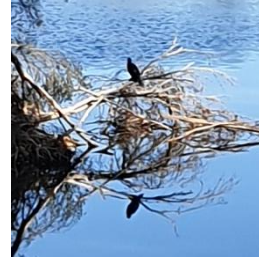
\$3,000.00

(all inclusive - airfare, accommodation, meals and tours)

'SATURDAY WALKS' - Contact Chris 'Activities Coordinator' for details

Walks start **9.00am** unless over 30degrees and then 8.30am
 These 2 photos are from the same walk – do you know where? Answers in next 'Grapevine'
 Photos 1 & 2 in last 'Grapevine' were from the Mullum Mullum walk

- Sat 6 March** Dorset Reserve Dorset Rd Croydon
- Sat 13 March** Lilydale to Mt Evelyn
- Sat 20 March** Barneong Reserve Croydon North
- Sat 27 March** Norton Road Croydon
- Sat 3 April** Lilydale Lake
- Sat 10 April** Millgrove to Warburton for Lunch **10.30am** start carpool
- Sat 17 April** Mullum Mullum Burnt Bridge (end of Ringwood Club car park)
- Sat 24 April** Wandin to Seville
- Sat 1 May** Kimberley Drive Reserve Chimside Park
- Sat 8 May** Mooroolbark Retarding Basin – Park behind Arcade Mooroolbark
- Sat 15 May** Lilydale to Lilydale
- Sat 22 May** Lilydale to Coldstream
- Sat 29 May** Lilydale Lake



Tradies Corner

Carpenter Hans ☎ 0418 111 499	Electrician Shockfree Electricians ☎ 0411 035 345	House Renovations Tandin Constructions Tim ☎ 0412 185 353
Kitchens Touchwood Kitchens ☎ 0418 542 130	Painting Craig ☎ 0421 889 326	Plumber Lachy ☎ 0438 563 788
Tile & Bathroom Renovations Stephen ☎ 0419 894 874		

OTHER NEWSY BITS!



A LOOK AT THE LIGHTER SIDE OF LIFE TO KEEP YOUR 'TEE HEE' (laughter) WORKING!

Pause for Thought!

Good friends, good books and a sleepy conscientious, this is the ideal life.

When you come to the end of your rope, tie a knot and hang on!

A successful man is one who makes more money than his wife can spend. A successful woman is one who can find such a man.

A stumbling block to the pessimist is a stepping stone to the optimist.

What Religion is Your Bra?

A man walked into the lady's department of a Macy's and shyly walked up to the woman behind the counter and said, 'I'd like to buy a bra for my wife.'

'What type of bra?' asked the clerk. 'Type?' inquires the man, 'There's more than one type?' 'Look around,' said the saleslady, as she showed a sea of bras in every shape, size, colour and material imaginable.

'Actually, even with all of this variety, there are really only four types of bras to choose.' Relieved, the man asked about the types. The saleslady replied: 'There are the Catholic, Salvation Army,



Presbyterian, and the Baptist types. Which one would you prefer?' Now totally befuddled, the man asked about the differences between them. The Saleslady responded, 'It is all really quite simple...'

The Catholic type supports the masses.
The Salvation Army type lifts the fallen.

The Presbyterian type keeps them staunch & upright,
The Baptist makes mountains out of mole hills.



Fish n Chips at Warrandyte beside the Yarra once again proved to be a great night. 23 members came, with 4 unfortunately having to pull out for different reasons at the last minute.

I told you I had ordered perfect weather, and we got it!!!! Ha Ha

The evening was perfect for sitting and having fish n chips and a chat.



Then after our fish n chips, we were spoiled by Olga with her Fruit Cake and Judy by her Banana Cake, which topped off the meal perfectly.

Thank you to both of you.



This night has gained popularity so much that we have another night booked for Friday night 5th March. If you could not join us for the last one please come along for a great night on the 5th.

And if you came last Friday, come back for another peaceful perfect night.

By Chris

A Mystery Trip! By John W

On Friday the 29 January nine members of our group, under the guidance of Chris our Activities Officer, embarked on a Mystery Trip using the train and tram network.

The weather forecast for that day was for constant rain, with rain coats and umbrellas we braved the elements. The train journey from Lilydale was uneventful until the Box Hill stop when Chris suddenly announced "we get out here!" We were then advised to catch the tram, but the "where to" was not made known. The tram trundled on through the rain, then through the city, with a left turn at Spencer Street, then a veer right on to the Port Melbourne line. It was very unfortunate for us, that with the rain on the outside and fogged up windows on the inside we weren't able to see much of the passing scenery.

On arrival at Port Melbourne stop we quickly made our way to the restaurant that Chris had booked for us. After coffee and a very enjoyable lunch we set off for a short walk toward St Kilda along the esplanade.

Part way along the walk we noticed an information board beside a very tall masonry column, which was an original column in its original place of the Centenary bridge (read inscription below) that spanned the rail line to service the port of Melbourne at station pier, the column is a lasting reminder of some of the area's history.



After the short walk it was back on the tram to Box Hill then train to complete the journey, you just never know where a mystery journey will take one, or what one might learn.

We all thank Chris for her planning for this great day out despite the weather.

Centenary Bridge Pillar inscription reads....

This reinforced concrete pillar is the only remnant of the Centenary Bridge and that remains on its original site of the St Kilda end of the now demolished bridge. The 305metre bridge was a continuation of Bridge Street, stretching over the four railway lines of Station Pier from Princes Street to Swallow Street, Port Melbourne and included a side ramp onto Station Pier.

When Station Pier was upgraded in the 1920s provision was made for a future bridge. In December 1933, with forthcoming Victorian Centenary Celebrations and the anticipated influx of visitors, the Melbourne Harbour Trust called for tenders for the design and construction of a overhead bridge at Station Pier.

The bridge was considered to be the first part of a grand scheme for a waterfront boulevard, a plan that was never fully realised.

Labour for the construction of the reinforced concrete bridge was provided by a local Unemployed Relief Program operating during the Depression and all the materials other than bitumen, were of Australian origin. The tram lines over the bridge as shown on the image were never constructed.

The Duke of Gloucester, Prince Henry, visited Victoria as the representative of King George V for the Centenary Celebrations. He arrived at Princes Pier on 18 October 1934 and his procession was the first to pass over the Centenary Bridge, after which it was opened to general traffic. Centenary Bridge was demolished in 1991.

A Day Drive to the 'Outer North'

Recently looking for somewhere different to drive, I went 'north'. Leaving the eastern suburbs behind, travelling north up Plenty Road to the Yan Yean Reservoir. Having not visited this area for many years, I was impressed with the variety of very pleasant parkland areas at the base of the wall and a couple of viewpoints for the Reservoir. Yan Yean was the first reservoir to be built in Melbourne in 1857 to ensure a reliable water supply for the city. At the time it was built, it was the largest artificial reservoir in the world.



Driving into Whittlesea, what a change to this city! Having not visited for about 25 years, there is a lovely tree lined main street (Church Street) and surrounding parklands along the banks of the Yarra Creek, Plenty River and Scrubby Creek which all converge in Whittlesea Park. Walking Church Street, it was good to see that businesses were less effected here than in the Melbourne suburbs by the C-19 virus. Lunch was in a lovely little café – Café 59

Drove through Whittlesea and travel past the parklands and the showgrounds along the Whittlesea Yea Road. A few kilometres along turned left into Jacks Creek Road to the smaller Toorourrong Reservoir situated at the base of the Kinglake National Park Mount Disappointment and the Great Divide mountain area. It dams the Plenty River, Wallaby and Silver Creeks and supplies Yan Yean Reservoir via an aqueduct. Built in 1884 after the drought years of 1876 and 1877, it was the only reservoir that draws water from the north side of the Diving Range until the Thompson Dam was built 1984.



The parkland has large grassy open spaces for children to play, wooded areas to explore and 'Yarn Circles' for people to sit and chat. There are also interesting facts embedded in the dam wall walk. Back to the main road, turned left and headed towards Yea.



Just before the Kinglake turn off there is the memorial to remember those who lost their lives in the Black Saturday Bushfires of 7 February 2009 when 173 people died, 2,000 houses were destroyed or damaged and a total of 430,000 hectares



of bush and productive farmland burnt. The memorial is to commemorate the 12 lives that were lost in the local area of Coombes, Humedale and Yea Roads. A larger memorial is at the Toorourroung Reservoir Parkland.

Continued the journey home via Flowerdale and the famous pub that helped save lives on that fateful day, Yea, Mount Slide and the Yarra Valley. A great little road trip!



On a perfect sunny Wednesday in February with car-pooling organised, we headed for Fingal on the Mornington Peninsula. (Don't know where Fingal is – inland from Rye.) This property was previously owned by Lee Freeman where he stabled the horses he managed. The most famous of them all with winnings of over \$14,500,000.00, was 'Makybe Diva' – 3 Melbourne Cups and Cox Plate.



The property is now owned by the St Andrews Beach Brewery who have beautifully repurposed the site as a Brewery and eatery. The stables have been magnificently converted into interesting places to eat (see above photo). Some stables remain individually divided while others have had the dividing wall removed to make a double area. Each stall has a plaque giving the name and details of the horse that used to be stabled there, including details of races and winnings with total winnings. Some of us were in 'Mummify's' stall (total winnings \$5,134,320.00), while others were in 'Mahogany' (total winnings \$3,670,978.00).

Thanks, Chris, for another great day 'Out'.



'Dining Out' - Left was at 'Oro Doro' Croydon and above at 'Gracious Grace' Lilydale (er, What's in the glass Pamela??)

On Saturday the 20th February 30 plus members of the group met for dinner at 'Gracious Grace' Cafe in Castella Street Lilydale next to the Museum.

The weather on the day had been described as a "Darwin day", hot and humid, was a pleasure to be in air-conditioned comfort.

The restaurant has a very varied menu, from the ever popular burger and chips through to calamari salad and a gnocchi dish plus other selections that sounded delicious from reading the menu.

The meals were well presented and arrived promptly.

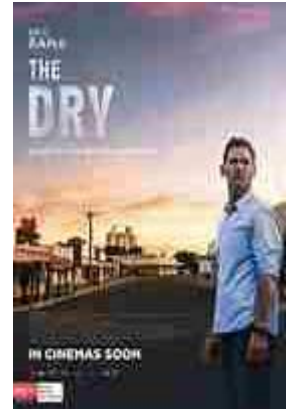
'Dining Out' is a great reason to escape the routine of dining at home and to get to know the newer members of the group.

Am sure 'Gracious Grace' Cafe will be on the 'Dining Out' calendar again. By your intrepid reporter John W

MOVIE REVIEW 'The Dry' by Lyn

When Federal Agent Aaron Falk (Eric Bana) returns to his home town after an absence of over 20 years to attend the funeral of his childhood friend Luke who allegedly killed his wife and child before himself. Aaron reluctantly agrees to stay and help investigate the crime. It also opens up an old wound of the death of 17 year old Ellie, 20 years ago. He suspects the two are link – but are they? He struggles to prove not only Luke’s innocence, but also his own, against the prejudice towards him and the pent-up rage of the terrified community. Set against a decade of drought and struggle.

A very good Aussie 'Who Done It' movie. (Filmed in Victoria)



MOVIE REVIEW 'Penguin Bloom' by Lyn

The true story of an unlikely hero. Sam Bloom’s (Naomi Watts) world is turned upside down when a near fatal accident leaves her paralysed and unable to walk. Sam’s husband Cameron (Andrew Lincoln), her 3 young sons and her mother (Jacki Weaver) are all struggling to adjust to Sam’s situation, when an unlikely hero enters their world in the form of an injured baby magpie they name ‘Penguin’. The bird’s arrival is a welcome distraction for the family and eventually making a profound difference in the family’s life.

Based on the book by - Cameron Bloom & Bradley Trevor Greive

A heart-warming true story.



Emergencyplus is an app you can put on your mobile. (It was recommended by a trainer who trained the staff at my school.)

You can choose to load onto an Apple or Android system (2nd choice).

When loaded the right hand screen will appear.



Save the App that could save your life.

Available on the **App Store** [Free Download]

GET IT ON **Google play** [Free Download]



Emergency Plus
If you are in an emergency, call Triple Zero (000) by tapping the button below.
Stay focused, stay relevant, stay on line

Buttons for: 000 EMERGENCY, SES 132 000, Police 00000000

My Location
Tell the operator your location

14 Mrs Macquaries Rd
Sydney NSW 2000, Australia

Latitude: -33.85965
Longitude: 151.22252
what3words: extend trials during

The **000 Emergency, SES & Police** are live buttons that will automatically call that service when pressed.

Also you will note your 'location coordinates' appear so you can pass the information to the service concerned as to where your location is.

Contributions to our Newsletter



Have you been travelling?

Have you attended a good show?

Have you read a good book?



Is there something you have experienced, that you would like to share with the members of the Branch? A story? One-liners? Photos from outings?

.....

Update your medicines list now – you'll need it if you go to hospital



A medicine list is a complete list of all your prescriptions, over the counter and complementary medicines.

Now is the time to make sure you have that list up-to-date and easy to find in case you unexpectedly have to go to hospital or visit a doctor or pharmacist who is not familiar with your health status.

National Seniors AUSTRALIA

Some News Items from National Seniors that you may have missed



Fear of leakage Toilet Maps to the Rescue!

You've had a coffee with other fellow travellers on the trip of a lifetime, and you're in the queue to enter that world-famous site - then it happens

Where's the toilet! Panic sets in. Overseas or even in an Australian city that little facility can be few and far between. If there is one, woe betide if you don't have the right coins.

If you are a traditionalist, there's the tried and tested underpants with built-in padding or the more flexible insertable Prevention is always a great option and the [Continance Foundation of Australia](#) has a wealth of bladder and bowel information, advice, resources and exercises to enhance your health down there, as well as leakage management techniques and aids. continence products. Always keep a few in your money belt.

However, the good news is we live in a remarkable digital age where technology such as a smart phone can offer solutions to such wee problems. Finding toilets and planning toilet-friendly travelling anywhere in the world, even in Italy, is now in the palm of your hand, so to speak.

There are numerous apps available to download onto the 'smart' phone. 'Toilet Finder' claims to locate 150,000 toilets worldwide.

Closer to home, in Australia *The National Public Toilet Map* app provides information publicly available toilets across the nation. The app is available on iOS and Android devices. You can view the National Public Toilet Map online: toiletmap.gov.au or download on Google Play or the App store.

The app provides information on over 19,000 publicly available toilets including accessibility, opening hours and facilities like showers and baby change and sharps disposal. You can also plan your trip mapping out toilets along the journey.

Prevention is always a great option and the [Continance Foundation of Australia](#) has a wealth of bladder and bowel information, advice, resources and exercises to enhance your health down there, as well as leakage management techniques and aids

[The Master Locksmiths Access Key \(MLAK\)](#) is a system that enables 24/7 access to public toilets for people with a disability or bladder or bowel condition. The MLAK master key opens all toilet facilities equipped with an MLAK lock, and can be ordered using the [MLAK order form](#).

Yarra Ranges National Seniors Australia Branch
Membership Application (NSA ABN 89 050 523 003)

PERSONAL DETAILS

Mr / Mrs / Miss / Ms / Dr First name _____ /
Last name _____ Date of birth _____ /
Address _____
Suburb _____ State _____ Postcode _____
Phone _____ Mobile _____
Email _____ Membership Number: _____

JOINT MEMBER DETAILS

Mr / Mrs / Miss / Ms / Dr First name _____ /
Last name _____ Date of birth _____ /
Phone _____ Mobile _____
Email _____ Membership Number: _____

MEMBERSHIP AND PAYMENT DETAILS



I/we would like to join for: (please tick) includes GST

- 1 Year Single \$45 Joint \$75 2 Year Single \$80 Joint \$125
- 5 Year Single \$195 Joint \$295 Lifetime Single \$425 Joint \$650

TOTAL PAYABLE: \$ _____

- Cheques / Money Order enclosed (payable to: National Seniors Australia)
- Please charge my credit card: Visa Master Card

Card number:

Cardholder's Name: _____ Expiry: _____ / _____

Cardholder's Signature: _____

NSA respects your privacy and is committed to protecting your personal information.
You can view the full details of our privacy statement online at nationalseniors.com.au

- I would like to receive 'My Generation' Magazine by Mail

MEMBERS

- Branches – Social & Friendship
- 'My Generation' Magazine
- Discount & Benefits
- Credit Card
- Car Buying Service
- Insurance
- Travel
- Competitions
- Online Shop

NEWS & EVENTS

- Latest News
- Policy & Media Updates
- In the Media / Media Releases
- Events

RESEARCH

- Finance
- Health & Aged Care
- Housing
- Retirement
- Social Connectedness & Communities

ABOUT US

- Board & Governance
- Leadership Team
- Policy Advisory Groups
- Careers
- Foundation Trust
- Partners
- FAQs Advertising

INFORMATION HUB

- Consumer Protection
- Healthy Ageing / Aged Care
- Social Inclusion
- Technology
- Work & Career
- Retirement
- Retirement Living Options

ADVOCACY

- How Advocacy Works
- Policy and Advocacy
- Submissions