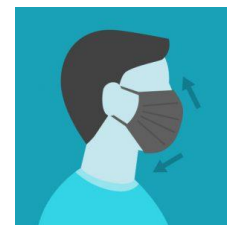


COVID Requirements

To enter the Branch Meeting, you need to use your Smart Phone and use the QR code for Brighton Seniors, which will be displayed on the door of the Lighthouse Centre. If you do not have a Smart Phone, please register your attendance manually on the list in the foyer.

Under current rules we can have 90 members in the Lighthouse Church. Masks will have to be worn, unless you have permission from your doctor not to wear one, due to a medical condition. Social distancing, as far as practical will also apply.

Masks can be removed while having Morning Tea. You will need to be seated in either the hall or church when having your morning tea.



If things change, we will send out an email and ring those members who do not have an email.

Branch Meeting, Tuesday 21 September 2021



A local historian David Jarman will give us an interesting talk about the background to the historic buildings along North Terrace, Adelaide.

The meeting starts at 10am at the Lighthouse Community Church, corner Jetty Road and The Crescent, Brighton on the beach side of the railway line. Arrive from 9.30am to allow time to complete the COVID entry requirements.

After the Meeting, members can enjoy lunch at the Glenelg Football Club on Brighton Road, Glenelg East. Seniors get 15% off their meal in the Bistro.

Payment for the Door Entry fee \$5, your annual subscriptions and outings can now be all made by the Tap and Pay method using a Credit or Debit Card.

Anniversary Lunch held on 25 August

An enjoyable 20th Anniversary lunch at The Junction, Morphettville Racecourse was attended by 29 people. It was disappointing that another 11 members had indicated that they would be there, but failed to come. If you are unable to attend a function after you have put your name on the list, please advise Graham Gurry on 8296 7646, so he can advise the venue. This helps the venue to permit other patrons to attend and helps a business to survive during these difficult Covid times.

Catering Helpers 21 September

Lleyan Adams, Catering Coordinator will directly contact members who have indicated that they can assist with Morning Tea. If you would like to be on the Morning Tea roster, speak with Lleyan or phone her on 0422 288 151.



The Walking Group meet 9.30am every Tuesday except when there is a Branch Meeting. On that week the group meet the following day. On Wednesday 22 September, meet at Brighton Jetty, walk to Seacliff Hotel, have a coffee break and return.

The contacts are Barbara Hansen 8295 4965 and Dawn May 8296 5031.


Upcoming Activities



Wednesday 29 September – Bus tour to Barossa Valley. Leave 9.00 am from Brighton and return 4.30 pm. Visit Lavender Factory including Morning Tea, walk around Tanunda, lunch at the Club House Tanunda and visit Barossa Valley Chocolate Company. Cost for tour is \$35 with people paying for own lunch. Masks must be worn on the bus.

- **Tuesday 19 October – Branch Meeting.** Richard from Rick O'Entertainment will sing to us featuring songs which many of us will know. Come along and sing along. A short AGM will be held, covering the period Feb to June 2021. It is expected that the current Committee will all nominate to remain on the Committee.
- **Wednesday 20 October -A visit to Townsend Park Retirement Village** has been arranged, starting at 10am. There is a limit of 20 people. There is no cost, and morning tea will be provided. Parking available; enter from 28 King George Ave, Hove.
- **Friday 22 October – Parliament House Visit.** The tour starts at 9.45 am and lasts for one hour. There is a limit of 28 people, so put your name on the booking sheet.
- **Tuesday 16 November – Branch Meeting.** A speaker from the Adelaide University Medical School, Lyndsey Collins-Praino will tell us about “Optimising memory and Cognitive Function as we get Older”.
- **Wednesday 24 November – Cummins Historic House** -Tour starts at 10.30am and includes Devonshire morning tea. Cost is \$10 per person. Transport by car. Cummins House is located at 23 Sheoak Avenue, Novar Gardens.

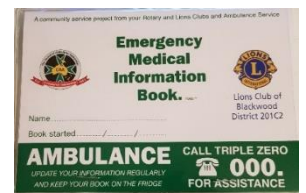


-  **Tuesday 30 November - Christmas lunch at Club Marion, 262 Sturt Road, Marion.** Our Christmas Lunch is always a joyous occasion. Members bring along items for the big raffle and there is usually a big variety of prizes. The cost is \$35, which includes a choice of 2 mains and 2 desserts. Put your name down asap.



Information Corner

- **Emergency Medical Information Book.** We have copies of this booklet for sale at \$2. In it you write details of your medications and other relevant medical history. Place the Emergency Book which has magnets on the back, on your fridge. If you need an ambulance, this is the place that the Paramedics will look to find it, and take it with you in the ambulance to hospital.
- **Out of date and unused medications.** Your unwanted medications can be brought along to the Branch Meeting and placed in the plastic tub on the Information Table manned by Leon Spender in the foyer of the Lighthouse Community Centre.



- **Defibrillator.** The Lighthouse Community Centre has acquired a Defibrillator, which can be used in an emergency should someone stop breathing due to a medical episode. It is located in the foyer of the Community Centre. No experience is needed to use this equipment, as the Defibrillator will guide you through the steps needed to operate it.

- **Door Prizes** are always welcomed. Thanks to those members who have brought along items to be used as door prizes. Donations can be given to Aileen Merrett, President or Julie Hockley, Secretary.

Contacts

President	Aileen Merrett	0438 854 029	Secretary	Julie Hockley	0410 053 973
Vice Pres	Pat Schirmer	0448 331 941	Treasurer	Bill Adams	0418 804 373